

GATEX

LASHING & LIFTING SOLUTIONS

www.gatexticaret.com



PRODUCT CATALOG

GATEX

LASHING & LIFTING SOLUTIONS



About Us

Our company was founded by a professional team with over 20 years of experience in the maritime and logistics industry. With our expert staff and deep industry knowledge, we provide lashing and lifting equipment supply services tailored to the needs of the maritime and logistics sectors.



Since the day we were established, we have adopted the principle of delivering high-quality products to our customers at the most competitive prices and with the fastest delivery times, while maintaining the highest level of customer satisfaction. In this direction, thanks to the strong partnerships we have built directly with manufacturers, we aim to always provide our customers with the best possible service.



Our lashing and lifting equipment supply services are critical for safe cargo transportation, cargo securing, and cargo handling in the maritime and logistics industry. All the materials in our product range are manufactured in compliance with international standards, undergo strict quality control processes, and are certified by international classification societies.

Our Mission

To be a reliable and preferred supplier in the maritime and logistics industry by providing our customers with the highest quality lashing and lifting materials at competitive prices.

Our Vision

To be recognized as a global supplier in the maritime and logistics industry and to continuously deliver the best and fastest solutions to our customers by keeping up with industry innovations.

Our Values

Quality: Always delivering the highest quality products.

Reliability: Ensuring timely and complete delivery.

Customer Satisfaction:

Providing fast and effective solutions to customer needs.

Innovation: Continuously improving and innovating by following industry developments.

Fast Supply: Supporting your business continuity by delivering the products you need in the shortest possible time.



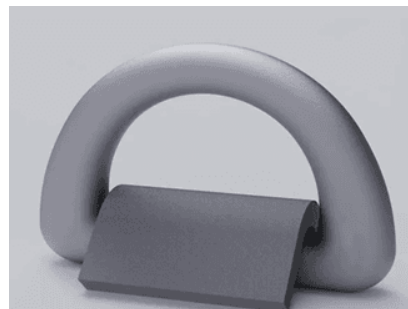
D-RING 36 TON SET WITH COVER



DNV Certified D-Ring 36 Ton Set Cover

Model: AL-C1
Weight: 2.3 KG
Material: Weldable Carbon Steel
Finish: Workshop Primer Hot-Dip Galvanized
B.L. Load: 360 KN (Min)

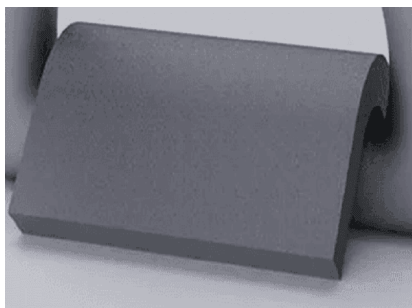
D-RING 50 TON SET COVER



DNV Certified D-Ring 50 Ton Set Cover

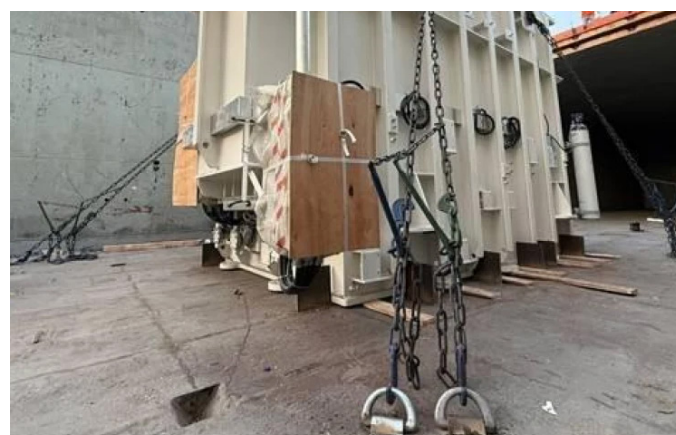
Model: AL-A1
Weight: 4.4 KG
Material: Weldable Carbon Steel
Finish: Workshop Primer Hot-Dip Galvanized
B.L. Load: 500 KN (Min)

D-RING COVER AL-C1 36 TON & 50 TON



DNV Certified D-Ring COVER

Model: AL-C1
Weight: 36 TON & 50 TON



LASHING CHAINS



DNV Certified Lashing Chains

Length: 6M
Thickness: 13MM

LASHING CHAINS



DNV Certified Lashing Chains and Turnbuckle Lever Set

- Total Chain Length: 6 m and Link Diameter: 13 mm
- Turnbuckle Lever Suitable for Tensioning Cargo Lashing Chains
- Durable Lashing Rings on Both Ends
- Suitable for Use on Open Deck Project Cargo, Ro-Ro, Container Vessels, and Transport Vehicles
- W.L.L. (Working Load Limit): 10 Tons

POLYESTER LASHING STRAP WITH MECHANISM



%100 POLYESTER

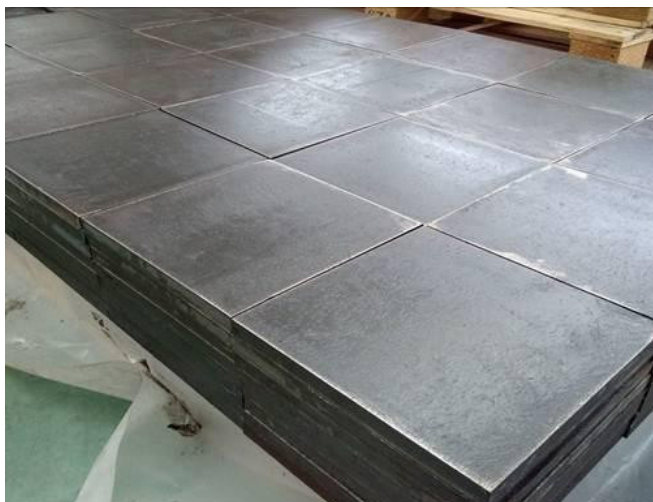
Length : 10 Mt.
Band Width : 75 mm
Max. Capacity : 10.000 KG

MECHANISM



%100 POLYESTER

Length : 10 Mt.
Band Width : 75 mm
Max. Capacity : 10.000 KG



STOPPER PLATE

SHEET METAL STOPPER

- 20cm x 20cm x 2 cm
- 15cm x 15cm x 2 cm
- 30cm x 30cm x 2 cm
- 20cm x 15cm x 2 cm

POLYESTER LASHING STRAP IN ROLL FORM



Polyester load securing straps in roll form, available in various colors, without a tensioning mechanism.

Length: 100m



HEAT-TREATED AND NON-HEAT-TREATED TIMBER



Different sizes and dimensions of heat-treated and non-heat-treated timber.

Length

3m x 10 x 10 cm

3m x 20 x 10 cm

5m x 10 x 10 cm

5m x 20 x 10 cm



EYE / HOOK TYPE TURNBUCKLE



DNV Certified Eye / Hook Type Turnbuckle

Standard: DIN Standard
Material: Q235 Carbon Steel
Technology: Forged
Surface Coating: Electro-galvanized

HOOK / JAW TYPE TURNBUCKLE



DNV Certified Hook / Jaw Type Turnbuckle

Weight: 14.2 kg
Material: Heat-treatable Steel
Coating: Hot-dip Galvanized
Breaking Load (B.L.): Min. 500 kN

EYE / EYE TYPE TURNBUCKLE



DNV Certified Eye / Eye Type Turnbuckle

Standard: U.S. Standard
Material: 45# Carbon Steel
Technology: Hot Forged
Surface Coating: Hot-dip Galvanized
Breaking Load: 5 times the Working Load Limit (WLL)

KNOB TYPE TURNBUCKLE



DNV Certified Knob Type Turnbuckle

Weight: 13.8 kg
Material: Heat-treatable Steel
Coating: Hot-dip Galvanized
Breaking Load (B.L.): Min. 500 kN
Product Label: Turnbuckle Rod

HOOK / HOOK TYPE TURNBUCKLE



DNV Certified Hook / Hook Type Turnbuckle

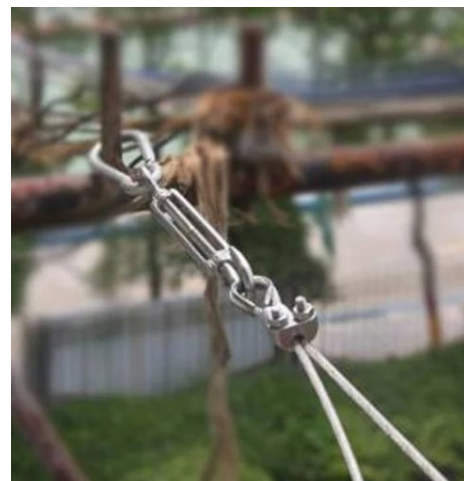
Standard: GB Standard
Material: Forged Iron
Technology: Casting
Surface Coating: Electro-galvanized

EYE / JAW TYPE TURNBUCKLE

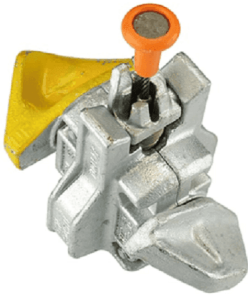


DNV Certified Eye / Jaw Type Turnbuckle

Standard: U.S. Standard
Material: 45# Carbon Steel
Technology: Hot Forged
Surface Coating: Hot-dip Galvanized
Breaking Load: 5 times the Working Load Limit (WLL)



SEMI AUTOMATIC TWISTLOCKS

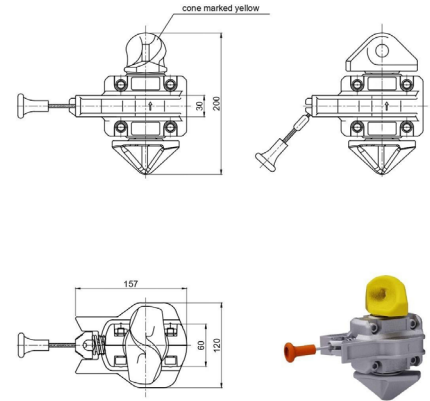


DNV Certified Semi-Automatic Twistlocks

BN: 500 kN

Weight: 6.5 KG

Specially designed for stacking and securing containers.
The lock closes automatically when the container is positioned.
Provides ease of use even in hard-to-reach areas.



FULL AUTOMATIC TWISTLOCKS



DNV Certified Fully Automatic Twistlocks

Model: BD-SL

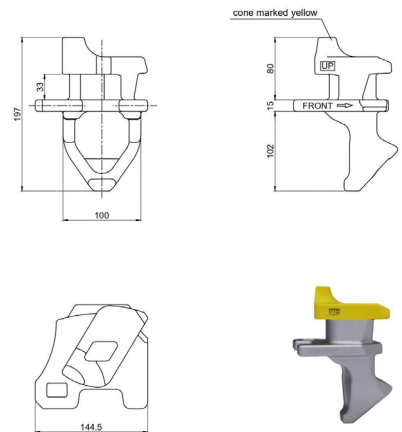
Weight: 5.0 kg

Material: Heat-treatable steel

Coating: Hot-dip galvanized

B.L. Shear: 420 kN (Min)

B.L. Tension: 500 kN (Min)



45° TAIL TWISTLOCKS



DNV Certified 45° Tail Twistlocks

Material: Ductile cast iron (body),
Forged (cone)

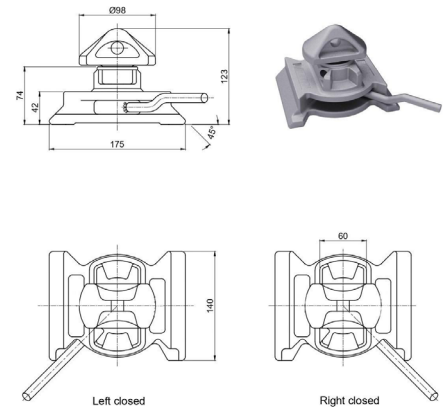
Weight: 4.9 kg

SWL Tension: 250 kN

SWL Shear: 210 kN

B.L. Tension: 500 kN

B.L. Shear: 420 kN



55° TAIL TWISTLOCKS



DNV Certified 55° Tail Twistlocks

Malzeme: Sfero Döküm (gövde)
Dövme (koni),

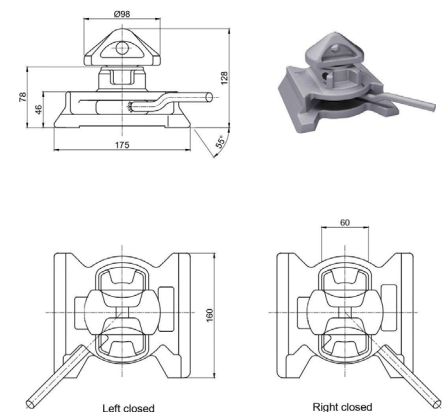
Weight: 4,9 kg

SWL Tension: 250 kN

SWL Shear: 210 kN

BL Tension: 500 kN

BL Shear: 420 kN





ANTI-SLIP ROLL MAT

Material: Rubber
Black with colored particles inside

Roll Dimensions: Length: 5000 mm
Width: 125 mm
Thickness: 3 mm / 6 mm / 8 mm / 10 mm
Weight: 4.9 kg
Breaking Strength: Min. 0.7 N/mm²
Elongation: Min. 68%
Coefficient of Friction (Static): Min. 0.8 (Dry)
Coefficient of Friction (Dynamic): Min. 0.6 (Dry)
Maximum Surface Pressure: $\pm 200 \text{ mT/m}^2$
Temperature Resistance: -30°C to +100°C

BV Certified

STEEL WIRES



STEEL CHAIN SLINGS



DNV Certified

Hooked steel chains used for load securing in different sizes and thicknesses

Thickness: 8mm / 10mm / 13mm / 16mm

STEEL CHAIN



DNV Certified Grade 100
High-Tonnage Chains

Hooked steel chains used for load securing in different sizes and thicknesses

Thickness: 8mm / 10mm / 13mm / 16mm

WEBBINGS SLINGS



DNV Certified Webbing Slings

Specially manufactured fiber webbing and endless slings used for lifting and handling heavy loads without damaging the cargo.

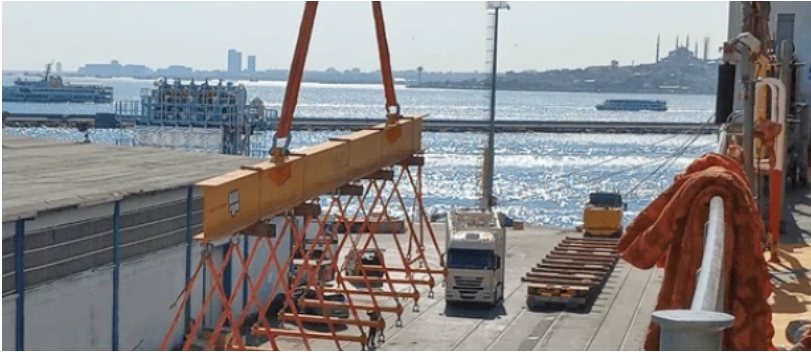


**CARGO NETS MADE OF
POLYESTER SLINGS**



LOAD DISTRIBUTING BEAM

Special lifting equipment used for the safe handling of long and heavy loads with different sizes, tonnages, and specifications.



Barbaros Mh. Lale Sk. Ağaoğlu My Office No: 2
Kapı No: 13 Ataşehir / İstanbul / Türkiye

0 538 215 17 97
0 533 235 52 97

gatex@gatexticaret.com
www.gatexticaret.com

